

Directions

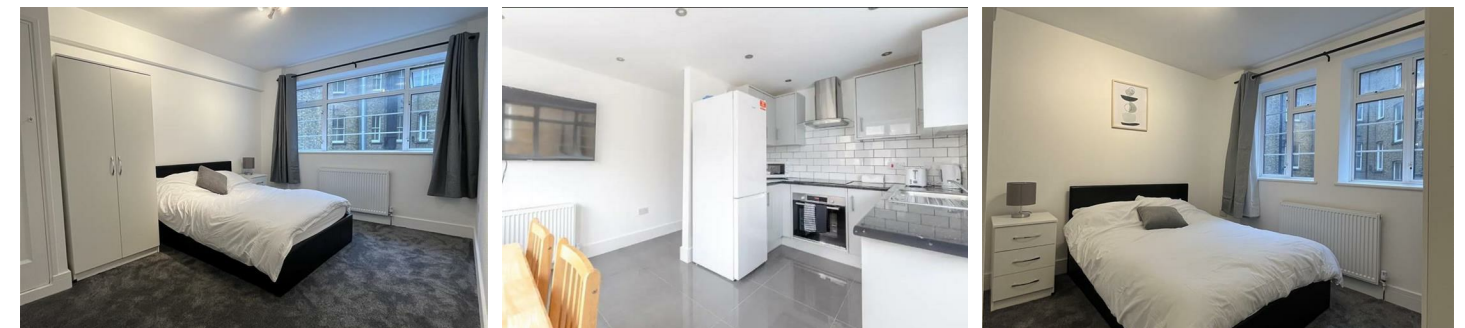
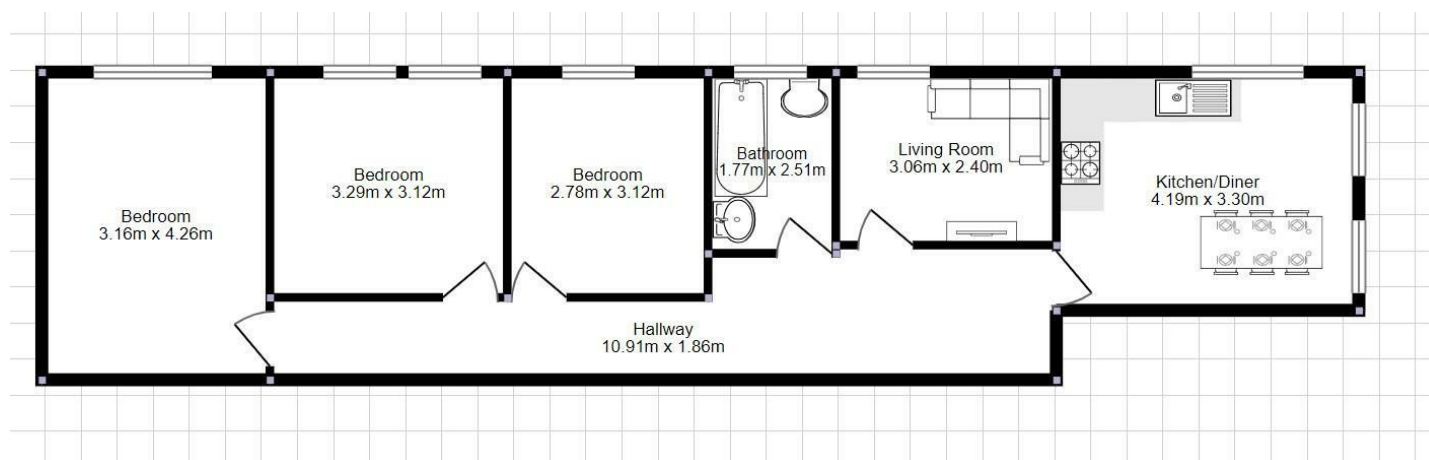
Viewings

Viewings by arrangement only. Call 02087436444 to make an appointment.

EPC Rating

C

Energy Efficiency Rating		Current	Potential
Very energy efficient - lower running costs			
(92 plus)	A		
(81-91)	B		
(69-80)	C	78	
(55-68)	D		
(39-54)	E		
(21-38)	F		
(1-20)	G		
Not energy efficient - higher running costs			
England & Wales		EU Directive 2002/91/EC	



Flat 21, West Kensington Court Edith Villas, London, W14 9AA

£4,490 Per Month

- Quiet Area
- Recently Refurbished
- Modern Interior
- Next to Station

West Kensington Court Edith Villas, London W14 9AA

Ideal Professional Sharers or a Family Four Bedrooms Open Plan Kitchen and Reception Room Modern and Stylish Great Location Gas/Heating Included Multiple Transport Links.

This bright and spacious property is an ideal home a family or professional sharers. This property has just been renovated and everything is Recently refurbished. Being on the rear side of the building keeps the main road noise away you a peaceful night sleep.

The property has a large reception room with an open plan kitchen with appliances, four bedrooms, a bathroom. The property is offered to the market furnished or unfurnished is available Sep 2026.

West Kensington Court is ideally located and makes it convenient the range of shops, bars and restaurants that Kensington has to offer, as well as the other excellent transport links that are located throughout the borough.

Shops, bars and restaurants are a stone throw away. The idyllic Holland Park and Hyde Park are a few minutes walk away

 4

 1

 0

 C

Council Tax Band: E

